



Count on it.

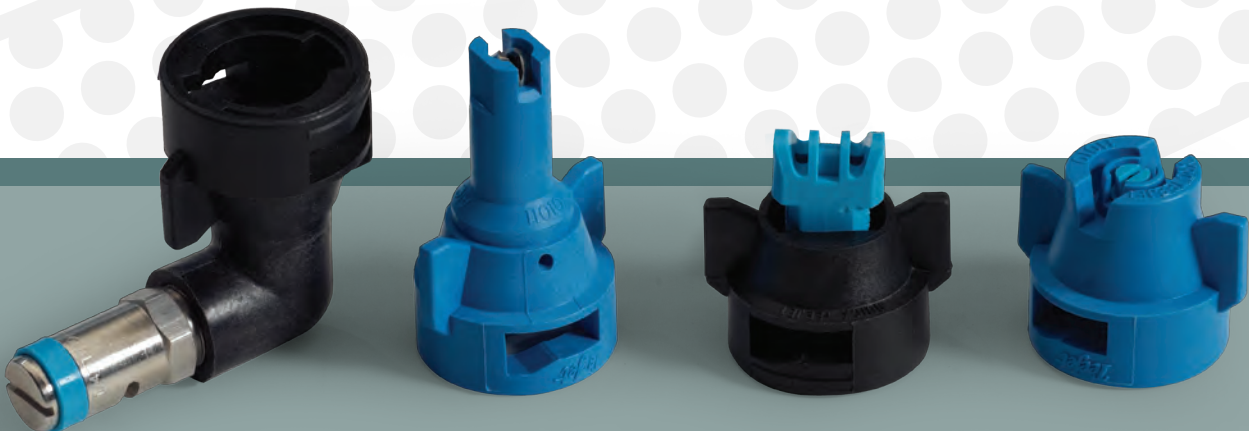
4 SIMPLE STEPS to complete YOUR SPRAYER

1 CHOOSE SYSTEMIC
OR CONTACT NOZZLES

2 FIND THE NOZZLE THAT
FITS YOUR APPLICATION
• herbicides • fungicides • insecticides
• liquid fertilizer • drift

3 ORDER THE CORRECT
CAPS, GASKETS AND
TIP STRAINERS

4 SELECT THE DESIRED
MAIN SUCTION
LINE FILTER
• 80 mesh • 50 mesh • 30 mesh



Multi Pro Spray Nozzle Selection Guide

Color Code	Nozzle Options	Toro Part#	Spray Pressure Bar	Flow in l/min	Liters Per Hectare - 50 cm Spacing									
					3 km/h	4 km/h	5 km/h	6 km/h	7 km/h	8 km/h	9 km/h	10 km/h	12 km/h	14 km/h
Yellow 0.2 gpm*	AIC	120-0700	1.0	0.46	184	138	110	92.0	78.9	69.0	61.3	55.2	46.0	39.4
	AI Turbo TwinJet**	120-0707	1.5	0.56	224	168	134	112	96.0	84.0	74.7	67.2	56.0	48.0
	TurfJet**	95-9221	2.0	0.65	260	195	156	130	111	97.5	86.7	78.0	65.0	55.7
	XRC	Not Available	3.0	0.79	316	237	190	158	135	119	105	94.8	79.0	67.7
	Tip Strainer - 100	120-0698	4.0	0.91	364	273	218	182	156	137	121	109	91.0	78.0
			5.0	1.02	408	306	245	204	175	153	136	122	102	87.4
Red 0.4 gpm*	AIC	120-0701	1.0	0.91	364	273	218	182	156	137	121	109	91.0	78.0
	AI Turbo TwinJet**	120-0708	1.5	1.12	448	336	269	224	192	168	149	134	112	96.0
	TurfJet**	95-9222	2.0	1.29	516	387	310	258	221	194	172	155	129	111
	XRC	117-5834	3.0	1.58	632	474	379	316	271	237	211	190	158	135
	Tip Strainer - 50	120-0699	4.0	1.82	728	546	437	364	312	273	243	218	182	156
			5.0	2.04	816	612	490	408	350	306	272	245	204	175
Brown 0.5 gpm*	AIC	120-0702	1.0	1.14	456	342	274	228	195	171	152	137	114	97.7
	AI Turbo TwinJet**	120-0709	1.5	1.39	556	417	334	278	238	209	185	167	139	119
	TurfJet**	95-9223	2.0	1.61	644	483	386	322	276	242	215	193	161	138
	XRC	117-5835	3.0	1.97	788	591	473	394	338	296	263	236	197	169
	Tip Strainer - 50	120-0699	4.0	2.27	908	681	545	454	389	341	303	272	227	195
			5.0	2.54	1016	762	610	508	435	381	339	305	254	218
Gray 0.6 gpm*	AIC	120-0703	1.0	1.37	548	411	329	274	235	206	183	164	137	117
	AI Turbo TwinJet**	120-0710	1.5	1.68	672	504	403	336	288	252	224	202	168	144
	TurfJet**	95-9224	2.0	1.94	776	582	466	388	333	291	259	233	194	166
	XRC	117-5836	3.0	2.37	948	711	569	474	406	356	316	284	237	203
	Tip Strainer - 50	120-0699	4.0	2.74	1096	822	658	548	470	411	365	329	274	235
			5.0	3.06	1224	918	734	612	525	459	408	367	306	262
White 0.8 gpm*	AIC	120-0704	1.0	1.82	728	546	437	364	312	273	243	218	182	156
	AI Turbo TwinJet	120-0711	1.5	2.23	892	669	535	446	382	335	297	268	223	191
	TurfJet**	95-9225	2.0	2.58	1032	774	619	516	442	387	344	310	258	221
	XRC	117-5837	3.0	3.16	1264	948	758	632	542	474	421	379	316	271
	Tip Strainer - 50	120-0699	4.0	3.65	1460	1095	876	730	626	548	487	438	365	313
			5.0	4.08	1632	1224	979	816	699	612	544	490	408	350
Blue 1.0 gpm*	AIC	120-0705	1.0	2.28	912	684	547	456	391	342	304	274	228	195
	AI Turbo TwinJet	120-0712	1.5	2.79	1116	837	670	558	478	419	372	335	279	239
	TurfJet**	95-9188	2.0	3.23	1292	969	775	646	554	485	431	388	323	277
	XRC	117-5838	3.0	3.95	1580	1185	948	790	677	593	527	474	395	339
	Tip Strainer - 50	120-0699	4.0	4.56	1824	1368	1094	912	782	684	608	547	456	391
			5.0	5.10	2040	1530	1224	1020	874	765	680	612	510	437
Green 1.5 gpm*	AIC	120-0706	1.0	3.42	1368	1026	821	684	586	513	456	410	342	293
	AI Turbo TwinJet	120-0713	1.5	4.19	1676	1257	1006	838	718	629	559	503	419	359
	TurfJet**	95-9226	2.0	4.83	1932	1449	1159	966	828	725	644	580	483	414
	XRC	117-5839	3.0	5.92	2368	1776	1421	1184	1015	888	789	710	592	507
	Tip Strainer - 50	120-0699	4.0	6.84	2736	2052	1642	1368	1173	1026	912	821	684	586
			5.0	7.64	3056	2292	1834	1528	1310	1146	1019	917	764	655

80 mesh 100-6992

50 mesh 100-8642
(Standard Equipment)

30 mesh 100-6991

* Recommended Valve Cal setting in Pro Control/XP: 46 for nozzles 0.2 gpm and 0.4 gpm. Use 23 for 0.5 gpm and higher.

** TurfJet and TwinJet Air nozzles are not compatible with the Toro Drift Reduction Boom Shroud.

Application rates shown for nozzle selection purposes only. Verify actual rate before spraying.

Speeds shown are for reference only. Always limit speed to maintain safe operation based on operating conditions.